

Product specifications



LED Floor lamps

Product Code: PNDB-1W-B

Power:1W

Luminous flux:80Lm

CIR : >80Ra

LED Chip Brand:SANAN Input voltage: DC12V/24V

Beam angle:70°

Color temperature options: warm white (2700-3000K),
neutral white (4000-4500K),
cool white (6000-6500K)

Other color options: red, green, blue (Standing stock color temperature: warm white, white. Other light color to be customized)

Protection class: IP67

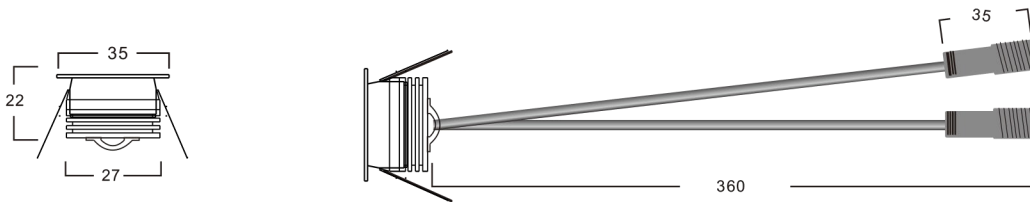
Light body material: surface ring (stainless steel), the main (6063 aluminum)

Service life: 35000 hours



Product Specifications:

Unit:mm

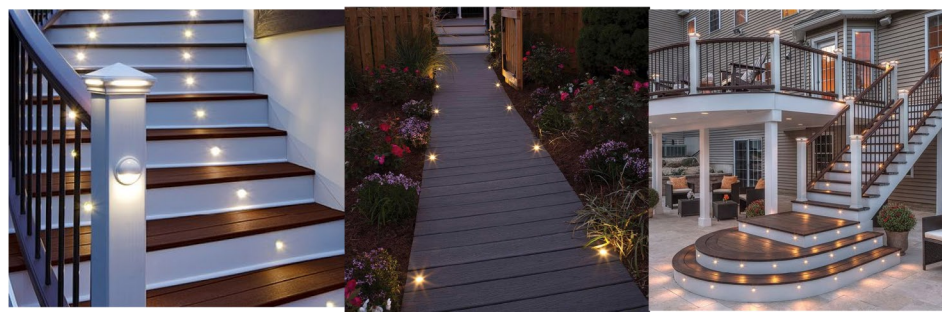


Product Features:

- ◆ Independent research and development, private-mode products, uncompromising attention, light body compact, flexible wide range of applications;
- ◆ Light color rich optional, amber light, warm white, sun white, cold white, red, green, blue and other light;
- ◆ Light body with 304 stainless steel surface ring, with corrosion-resistant, high temperature, never change color, real durable;
- ◆ The main surface can withstand pressure up to 300KG or more;

Applications:

Indoor and outdoor flooring, squares, sidewalks, gardens, bridges and other outdoor sites

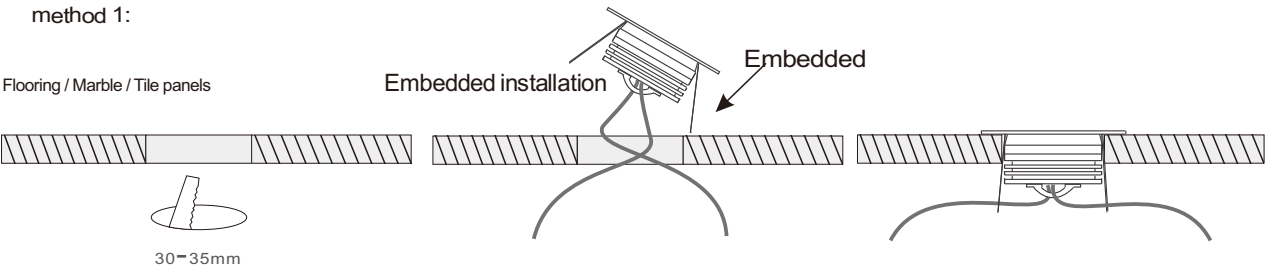


Detailed description:

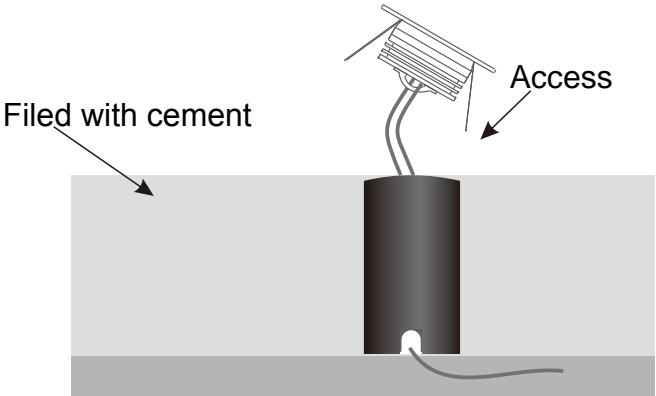
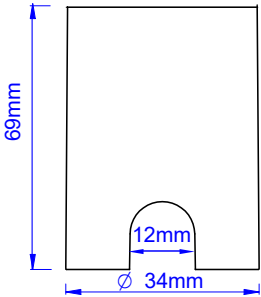


Use the installation method

method 1:



Method 2:



Wiring installation (parallel type):

Access DC 12V/24V, can be used in the market common constant voltage transformer, the project is simple to install.

