

PE386



Features:

- Front cut dimming, smooth and fine dimming
- Metal knob brightness adjustment
- Support infrared remote control dimming on / off to quickly switch brightness
- There are 3 custom scenarios for remote control
- Super compatibility
- Glass panel, metal knob, strong texture
- Super dimming compatibility
- Slow on and slow off function
- Dimming range 0-100%
- Minimum brightness setting
- 5-year warranty

CE
RoHS

General description:

PE386 dimmer is a high-power thyristor dimmer developed by our company. One knob can switch on and off and adjust the light. At the same time, it also supports the control function of infrared remote controller, smooth dimming and setting the minimum brightness. The unique design of slow lighting and slow extinguishing function can experience more comfortable lighting, remote control, fast brightness switching, fast brightness switching and other functions.

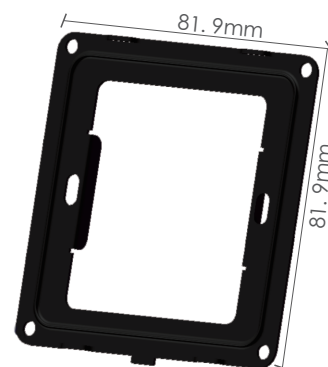
Specification:

Model		PE386
OUTPUT	Out Voltage	0-250Vac
	Load Power	3-500W Max
	Dimming function	leading edge dimmer
	Max control signal	500W
INPUT	Input Voltage range	200-250Vac
	Input power	<2W
	Frequency	50/60Hz
	control mode	knob dimming/ on and off
	remote control	IR remote control (remote range is less 15M)
ENVIRONMENT	Working Temperature	ta: 45°C tc: 85°C
	Working Humidity	20 ~ 95%RH, non-condensing
	Storage temp.,Humidity	-40 ~ 80°C 10~95%RH
	Waterproof grade	IP20
PROTECTION	Over Load Protection	Use within the specified load range
	Short Circuit Protection	The output cannot be short circuited, which will damage the dimmer and cannot be repaired
	Non-Load Protection	No load voltage output
OTHERS	Dimension	86×86mm(L×W)
	Packing	100×92×62mm(L×W×H)
	Weight (G.W.)	158±10g

Dimension:



DIMMER

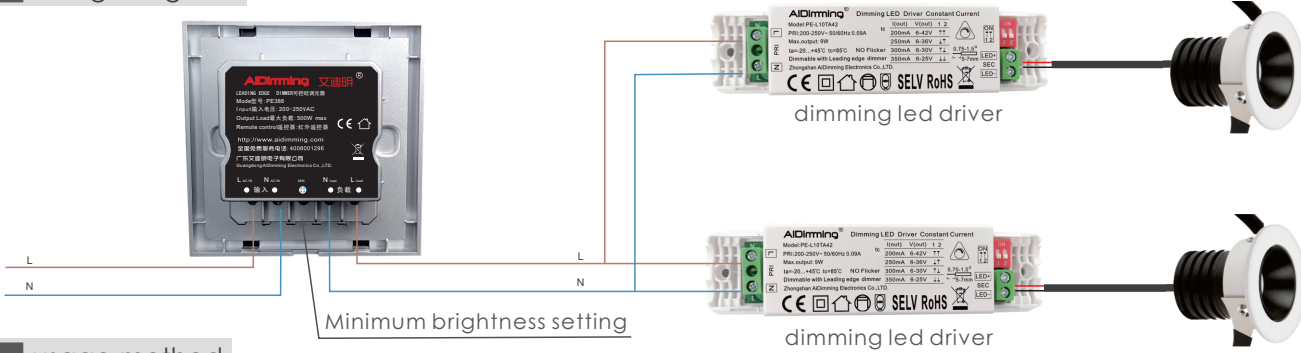


Fixed gusset plate



Infrared remote controller

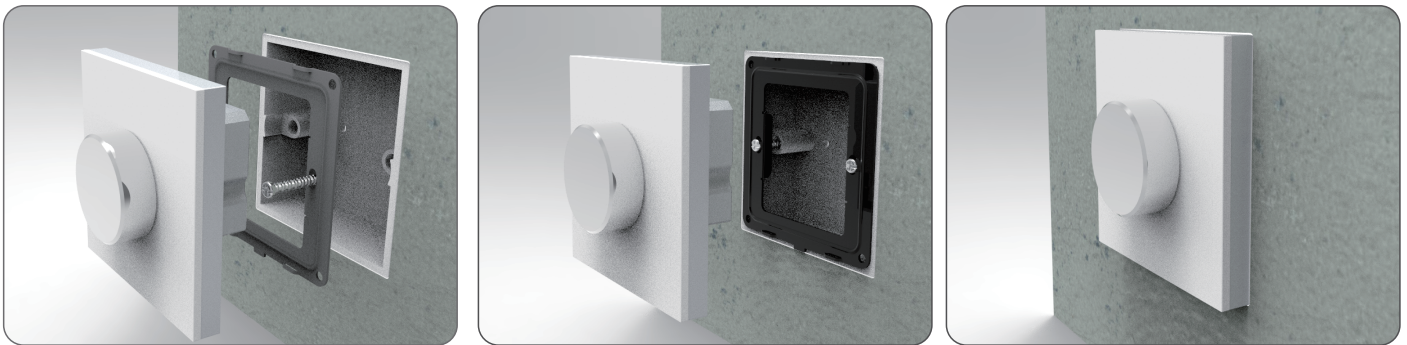
Wiring Diagram:



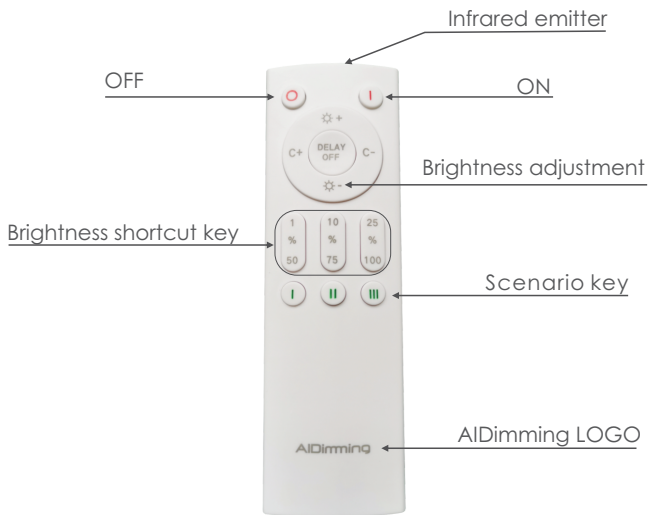
usage method:

1. Turn the knob on / off function. At this time, the red indicator light will go out and it is turned on
2. When the dimmer is turned on, rotate it clockwise to increase the brightness, and in the reverse direction, it will be dimmed
3. When operating the remote control, it is necessary to align the window of the infrared receiving panel of the dimmer and control the maximum distance of 15m
4. Dimmer can be used in front and back edge dimming power supply

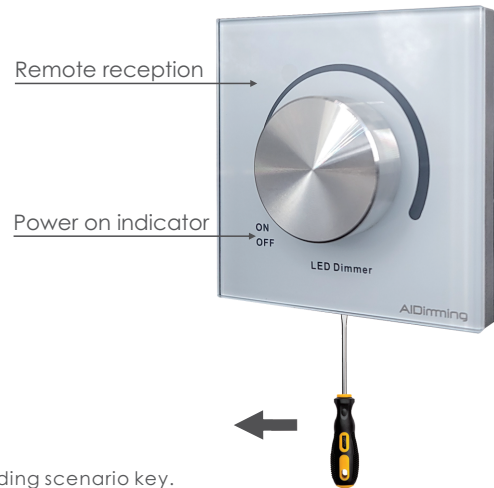
Installation:



The remote control usage method:



Disassembly method



Custom scenario key brightness:

press the scenario key for less than 3 seconds to call up the brightness of the corresponding scenario key. Press and hold the scenario key for more than 3 seconds, and the indicator light will be on for a long time, Remember the current brightness to the corresponding scene key.

Instructions for use:

1. When using this dimmer, please pay attention to distinguish the input end and output end, and power on only after checking that there is no error;
2. The load is controlled within the power range of the dimmer;
3. The input voltage range of the product is ac200-250v, and the operating ambient temperature is - 20 to + 45 ;
4. The output of the dimmer shall not be short circuited, otherwise the dimmer will be burned and cannot be repaired;
5. The interior of the product is AC. please operate according to the specifications with a certificate.

Disassembly is not for warranty;

The pictures and specifications is for reference only, in kind prevail, specifications are subject to change with further notice.